

Germany



BECKER, Felix

LANGER, Susanne

SCHMOECKEL, Caroline

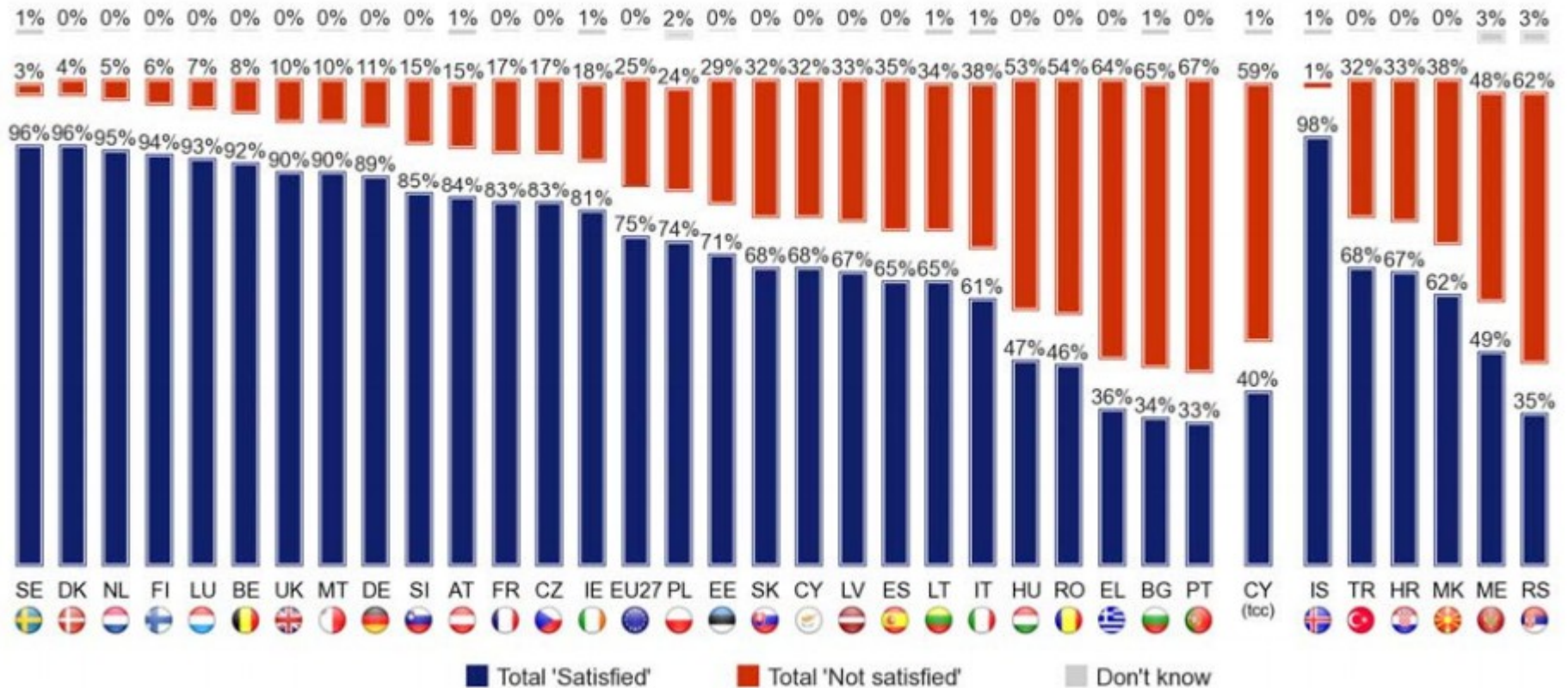
WOHLFAHRT, Ann-Christin

CRON, Michelle

Eurobarometer

People's satisfaction regarding their lives

QA1. On the whole, are you very satisfied, fairly satisfied, not very satisfied or not at all satisfied with the life you lead?



89% of Germans are satisfied with their lives

Germany's concerns

- Germans are most concerned about:
 - Pensions
 - Unemployment
 - The economic situation in Germany
 - Regarding Europe, Germans are concerned about other Member State's public finances
- Rising prices/ inflation and unemployment are the topics that concern EU citizens the most right now

Germany's opinion of Europe

- 23 % think that things are going in the right direction – 45% think things are going in the wrong direction
- 46% think that Europe is a waste of money

BUT

- Only 30 % think that Germany would face a better future outside of Europe

Germany's Knowledge about EU

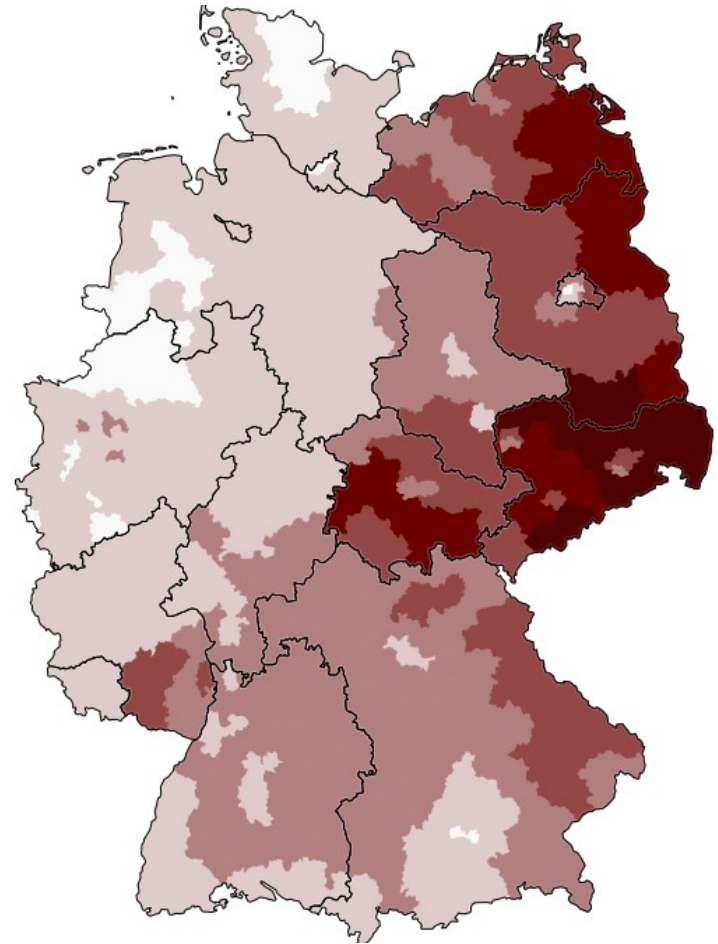
- 51% of Europeans understand Europe
- 46% Don't understand Europe
- 3% express no opinion

BUT:

- Germans are below average

Right-wing Parties in Germany

- Main two active right-wing parties:
 - Nationaldemokratische Partei Deutschlands (NPD) with 5.900 Members
 - Republikaner (REP) with 5.800 Members
- Several small parties: e.g. Die Rechte, Bürgerbewegung Pro Deutschland
- Most voters for right-wing parties in eastern Germany



Right-wing Parties in Germany

- Since 2005 decrease of votes for NPD

BUT

- In 2013 the party „Alternative for Germany“ was founded
 - Conservative and euro-currency skeptic
 - Anti-euro but not anti-EU
 - Accused of using the language of right-wing populists
 - Quite successful in German federal election in 2013 (4.7%)
 - Almost overcome the 5% barrier to enter the German Parliament
- The Euro crisis did not increase the number of right-wing voters but an increase in euroscepticism is visible

Votes for NPD during elections

Bundestagswahlergebnisse ^[128]		
Jahr	Stimmenanzahl	Stimmenanteil
1965	664.193	2,0 %
1969	1.422.010	4,3 %
1972	207.465	0,6 %
1976	122.661	0,3 %
1980	68.096	0,2 %
1983	91.095	0,2 %
1987	227.054	0,6 %
1990	145.776	0,3 %
1994	n. a.	n. a.
1998	126.571	0,3 %
2002	215.232	0,4 %
2005	748.568	1,6 %
2009	635.525	1,5 %
2013 ^[129]	560.660	1,3 %

Convergence Criteria

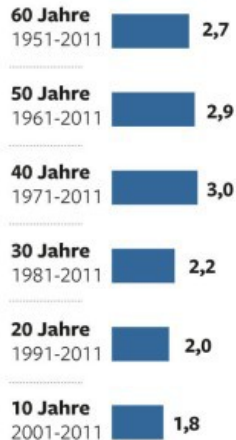
Budget Deficit to
GDP
max. 3%

Inflationsrate in Deutschland

Inflation in Prozent

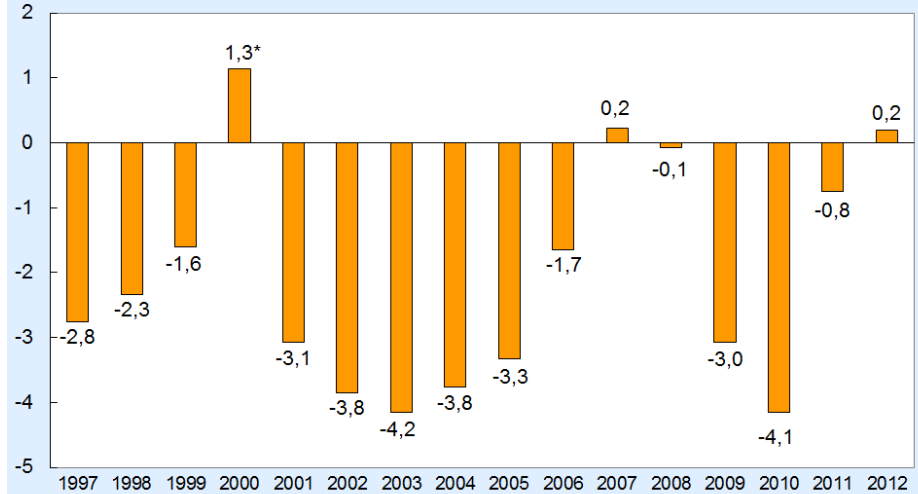


Durchschnitt in Prozent



Quelle der Daten: Statistisches Bundesamt

Government Net Financial Balance in % of GDP in Germany



* Including UMTS sales revenue
Source: Federal Statistical Office; Ifo Institute.

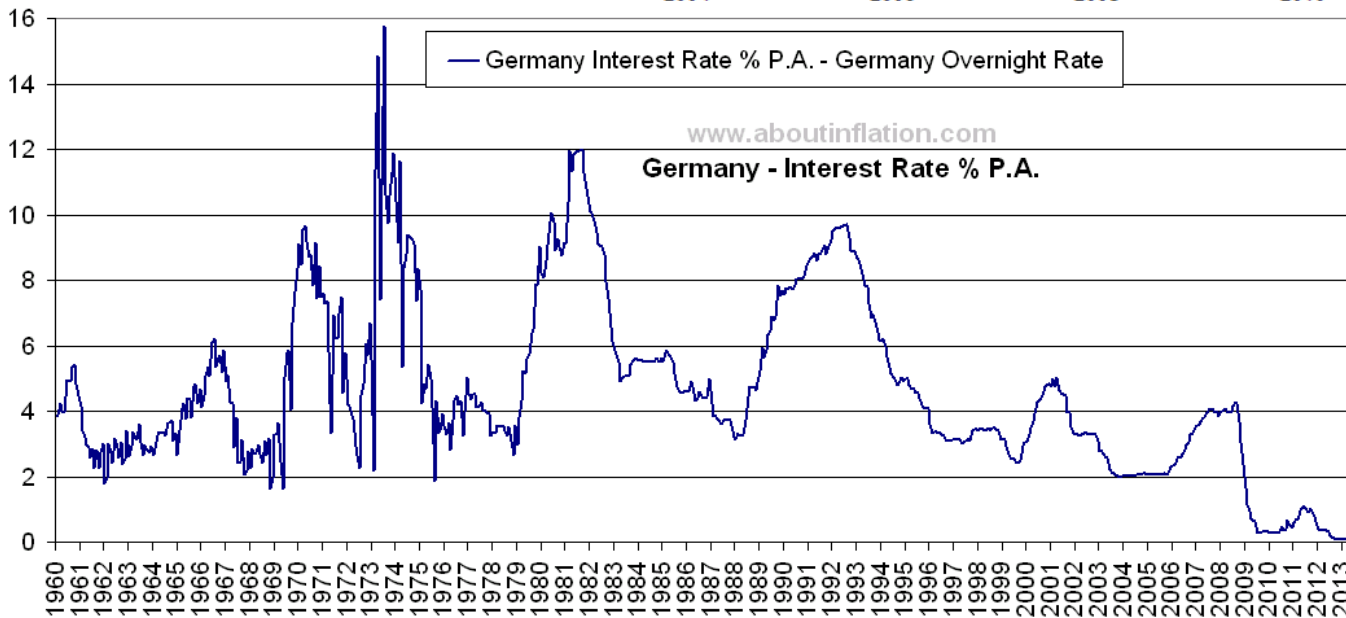
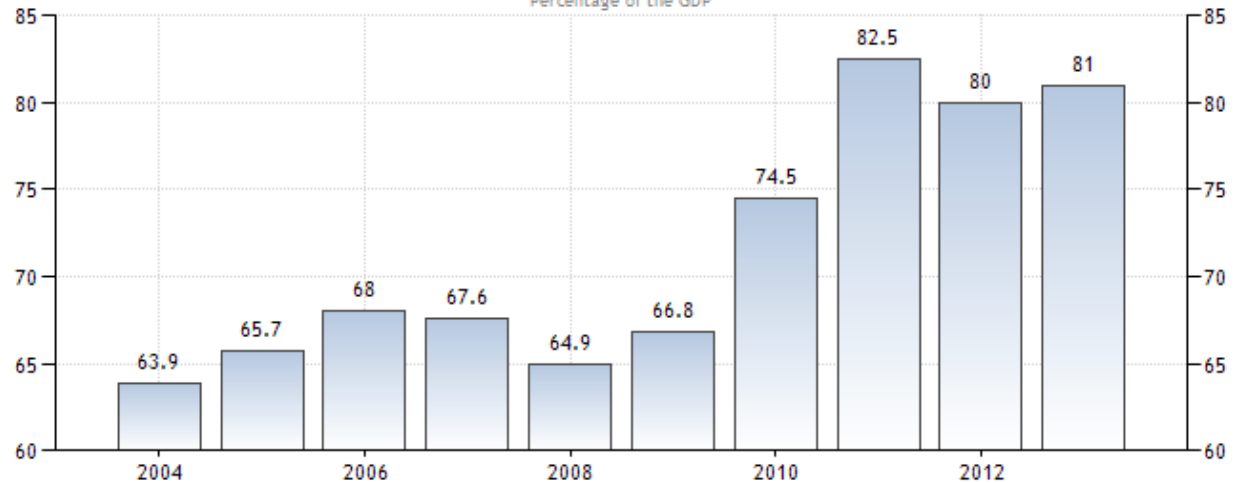
© ifo

HICP Inflation Rate
max. 2.5

Convergence Criteria

Dept-to-GDP
ratio
max. 60%

GERMANY GOVERNMENT DEBT TO GDP
Percentage of the GDP



E: WWW.TRADINGECONOMICS.COM | EUROSTAT

Long-term
interest rate
max. 4.81%

Sources

- [http://
www.bpb.de/politik/extremismus/rechtsextremismus/41904/rechtsextreme-parteien](http://www.bpb.de/politik/extremismus/rechtsextremismus/41904/rechtsextreme-parteien)
- <https://netzpolitik.org/2012/rechtsextreme-einstellungen-in-deutschland-wo-in-deutschland-rechtsextreme-parteien-gewahlt-werden/>
- <http://www.fr-online.de/politik/npd-die-npd-ist-eine-sterbende-partei,1472596,21035138.html>
- http://de.wikipedia.org/wiki/Nationaldemokratische_Partei_Deutschlands
(picture)
- <http://www.tradingeconomics.com/germany/govern>